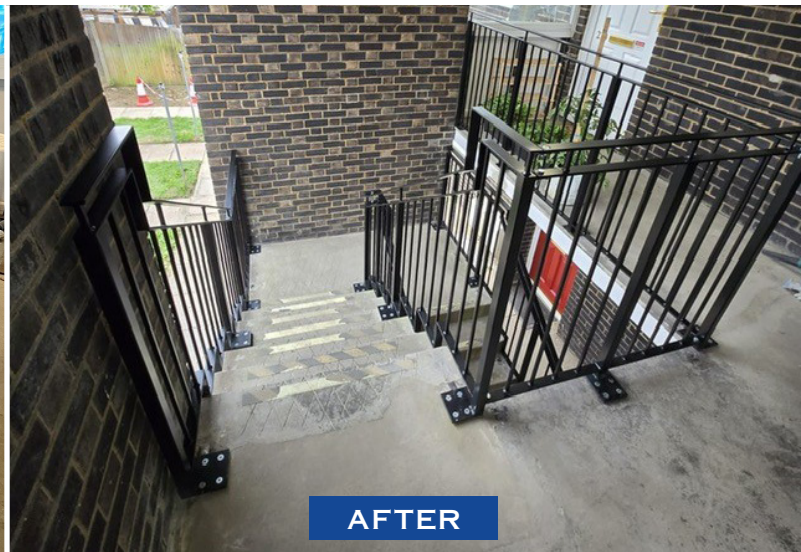


Social Housing Building

Balustrading to Stairwell & Landing Area



PROJECT OVERVIEW

Background

When a Local Authority needed to upgrade out-dated and non-compliant balustrades at a two-storey residential block in Stevenage, WC Evans were called upon to provide the replacement. The priority was to deliver a cost-effective, regulation-compliant design for both the stairwells and landing areas, while keeping disruption for residents to an absolute minimum.

Solution Provided

Drawing on more than six decades of expertise in precision steel fabrication, WC Evans & Sons were well-placed to design and deliver a bespoke, long-lasting solution for the client.

On this project, the existing balustrades were removed in their entirety to allow for a completely new installation. The team at WC Evans then fabricated custom powder-coated picket-style infill panels to suit each location, along with a matching flat-bar handrail topped with a warm-to-touch plastic capping for comfort and safety. Every element was manufactured in-house to ensure accuracy, durability, and full compliance with current standards.

The completed installation provided a contemporary upgrade that aligns seamlessly with Part K of the Building Regulations - delivering exactly what the client needed with minimal inconvenience to residents.

CLIENT	Local Authority
SECTOR	Residential / Social Housing
LOCATION	Stevenage
SOLUTION	Balustrade Panels & Handrail

